



Manny's Station Announcements Modpack Volume 3 Final
for the Passenger Information System Tool FIS2005
by Thomas Boschen and Train Sim World Series

Table of contents

Modpack Contents	page 2
Table of contents & preliminary information about the tools	page 2
Download link and installation instructions FIS2005	page 3
Automatic and manual installation of sound packages	page 5
Recommended settings for FIS2005	page 9
Operation FIS2005 loading a duty roster	page 12
Adjustment of start-bat file	page 19
Installation of Manny's PAK files	page 20
Modifications of the platoons	page 22
Conclusion	page 23



Thank you for downloading Manny's Station Announcement
Modpack Volume 3 Final for Train Sim World

This modpack consists of several parts, which I scripted and modded myself
except for the FIS2005 tool.

1. FIS2005 by Thomas Boschen for :

- Stop announcements in the train with change possibilities in RB & RE trains
- driver announcements in long distance trains with stops, changes & connections
- Station Announcements to reinforce the Station Announcements Mod

2nd Manny's Station Announcements Mod :

- Station announcements for departures, arrivals, through trains, delays and cancellations

3. train mods :

The following have been added to most locomotives and railcars :

- Display button for announcements at red signals
- partly new door sounds and a stay back please added

Some information for all who don't know the tool FIS2005.

This tool was developed in 2005 for the Train Simulator from Microsoft. Later it was unfortunately no longer developed.

The latest version is 1.0 Build 112 RC 2.

Later there were some sound packages for Train Sim World 1, but unfortunately they were not developed any more.

Since this tool runs externally in the background, it can be used for all train simulations.

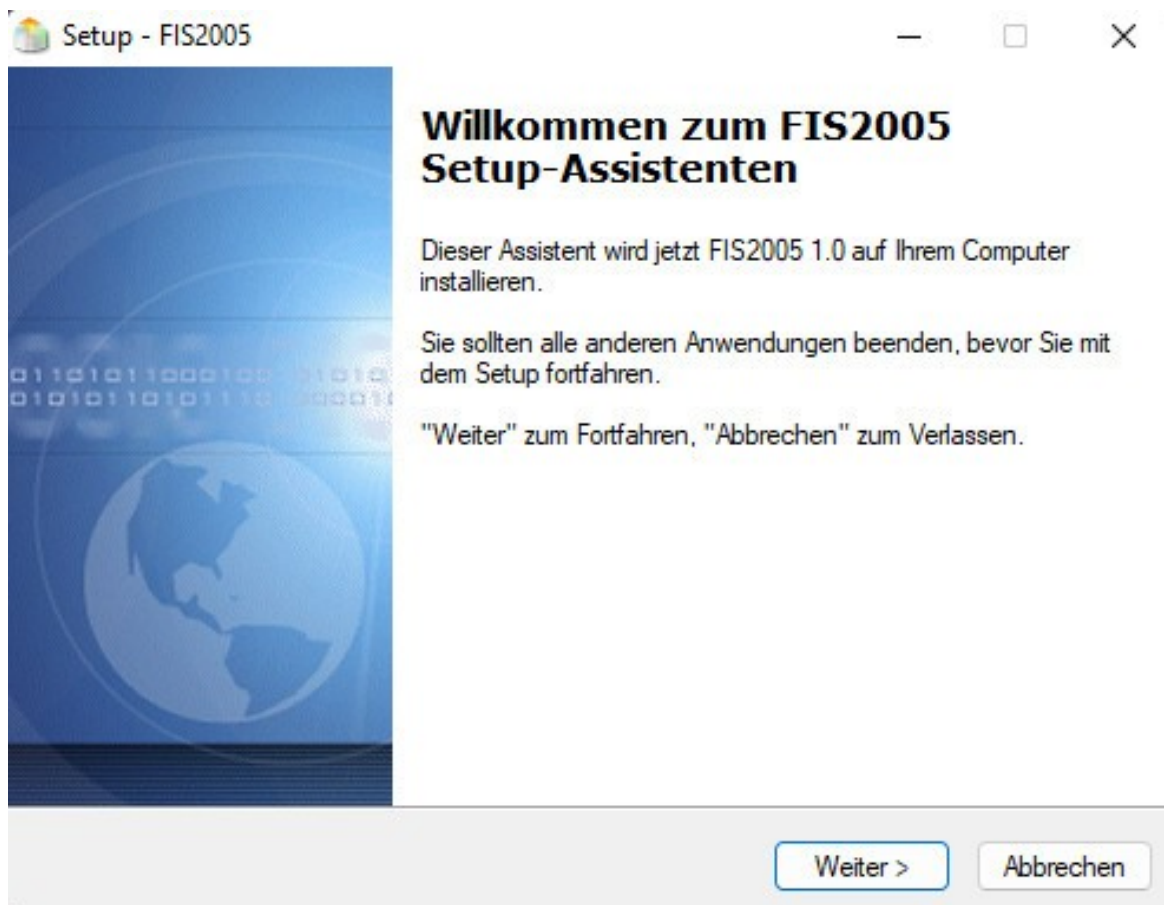
Download link and installation applications FIS2005

In this guide I will explain the most important things about installation, settings and use.

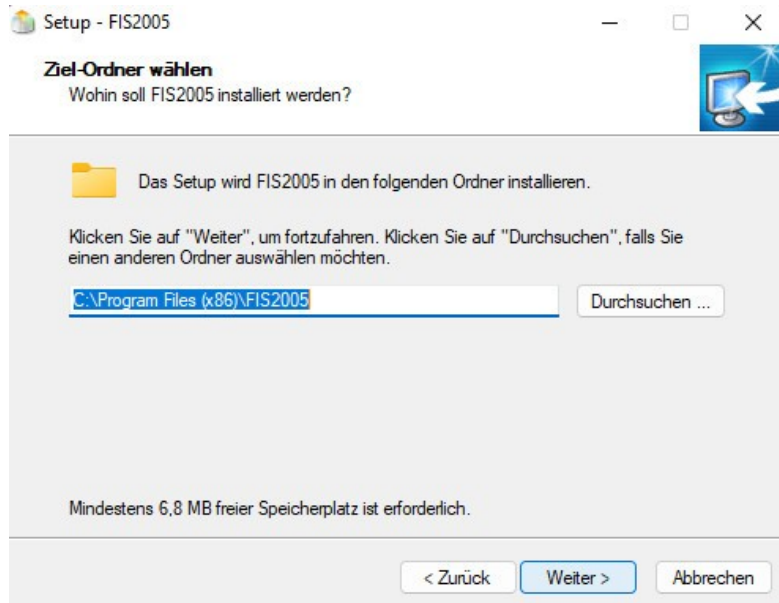
FIS2005 Original Download Link :

<https://the-train.de/downloads/entry/1432-fis2005/>

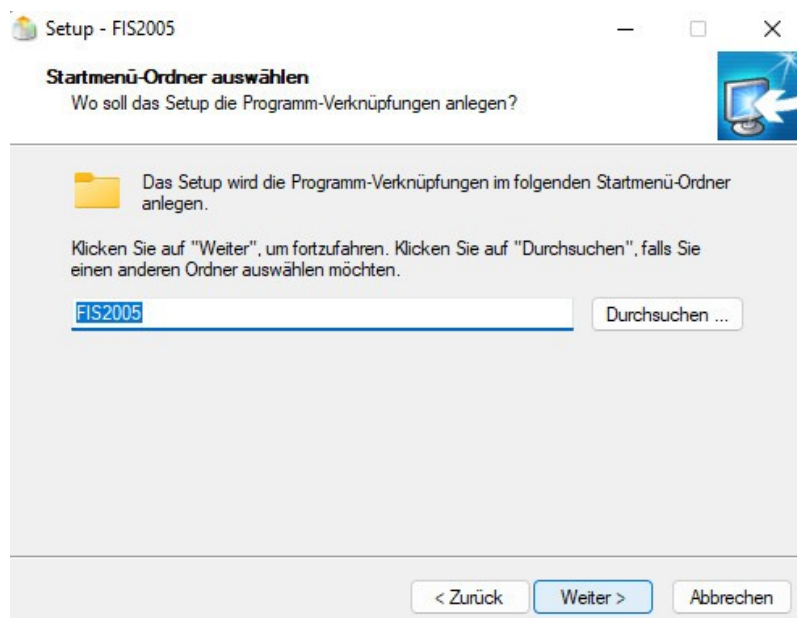
Now unzip the file and go into the folder FIS05RC3 and execute the execute the FIS05RC3.exe.



This is the start window of the installation. Actually self-explanatory just click on continue there.

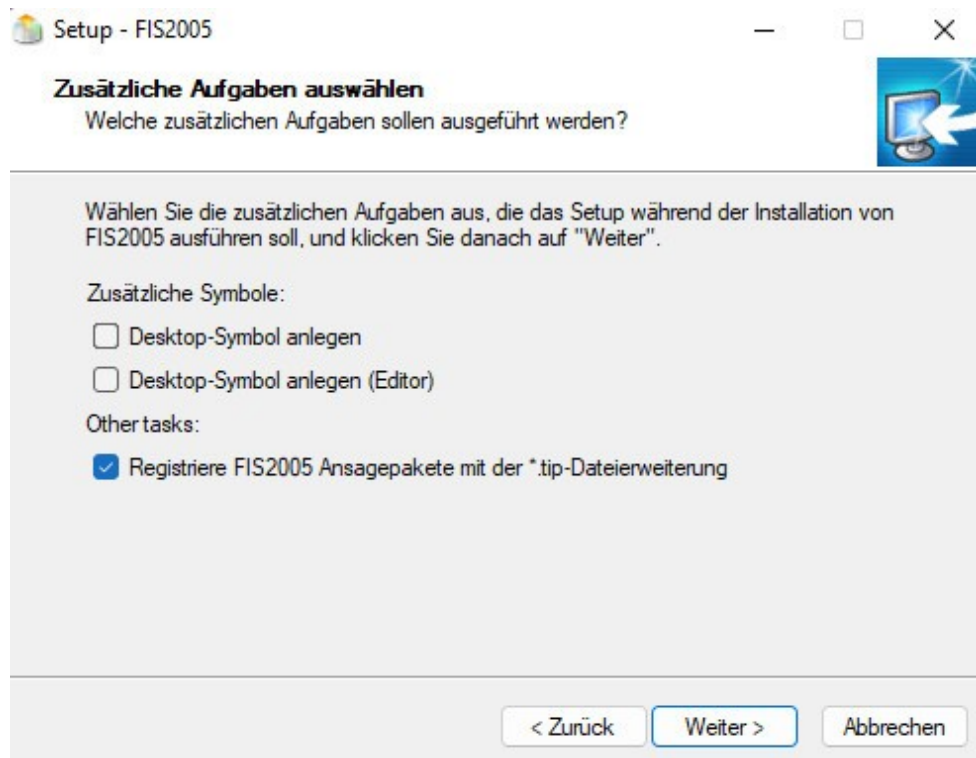


Now select where you want to install the tool. Note that the tool takes only 6.8 MB, but per route will then be about 200 - 250 MB for the sound addon per route. So you should have about 1 GB free space for all german routes. Then click on continue again.



Here you can click on continue or make your adjustment.

Now comes the most important thing. In order to install the route packages automatically via double-click, you have to check the box Register FIS2005 announcement packages, if it is not already checked automatically.



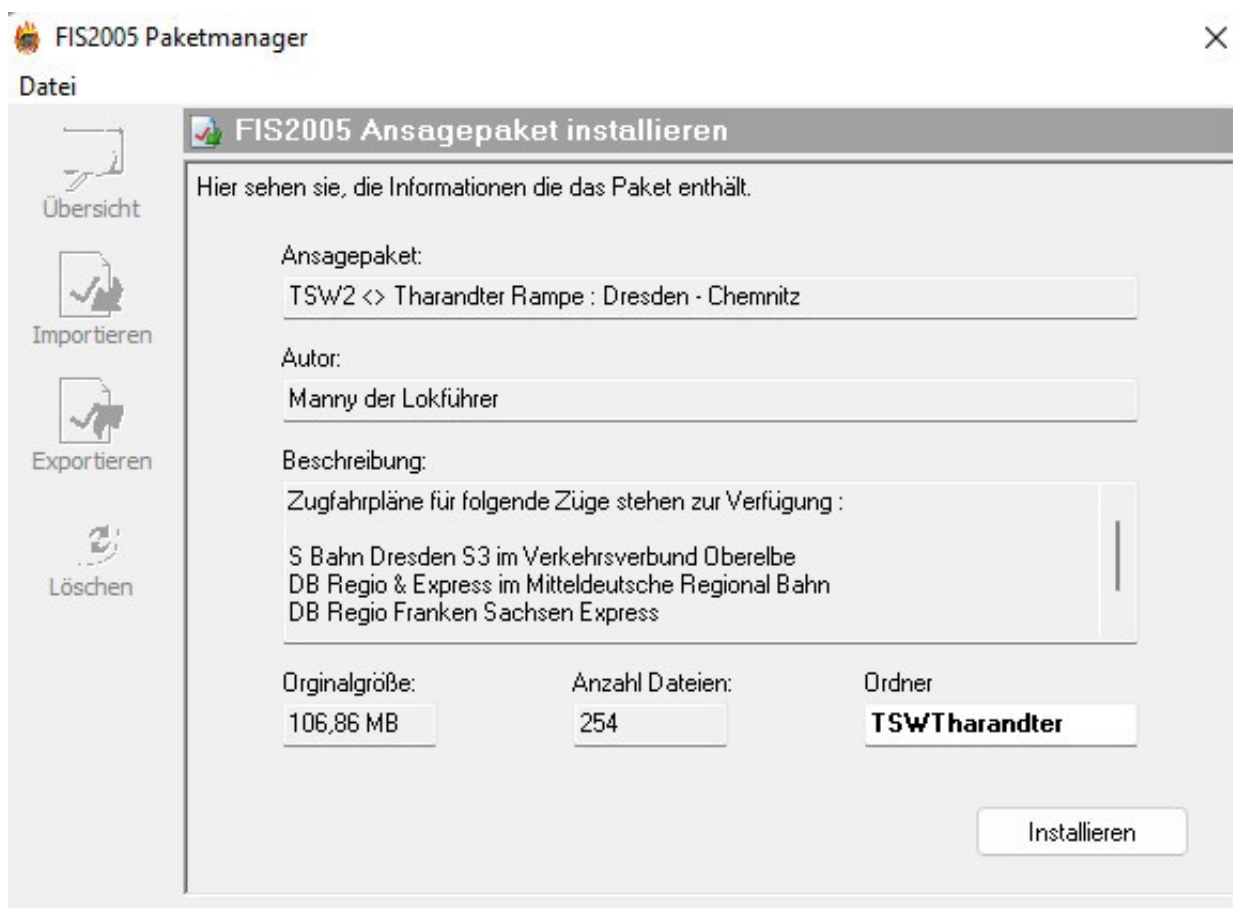
Then please click on continue. This completes the installation of the first tool.

After the installation you have 2 new icons or tools.

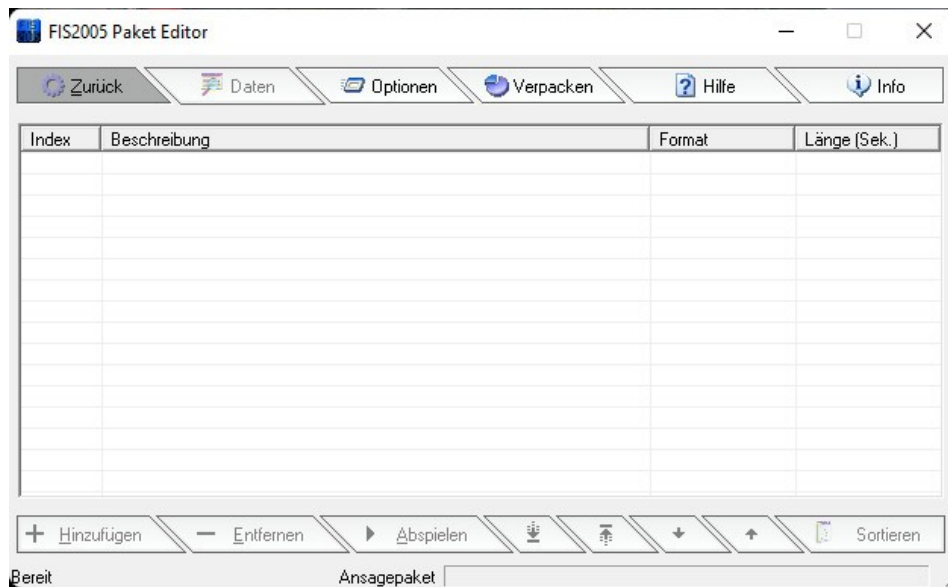
Once in red FIS2005 that is the main program which is needed to play the sound files. The second tool in blue is the FIS2005 editor there, these sound packages can also be imported and exported. If it does not happen by double click.

Installation von Manny's Soundpaketen

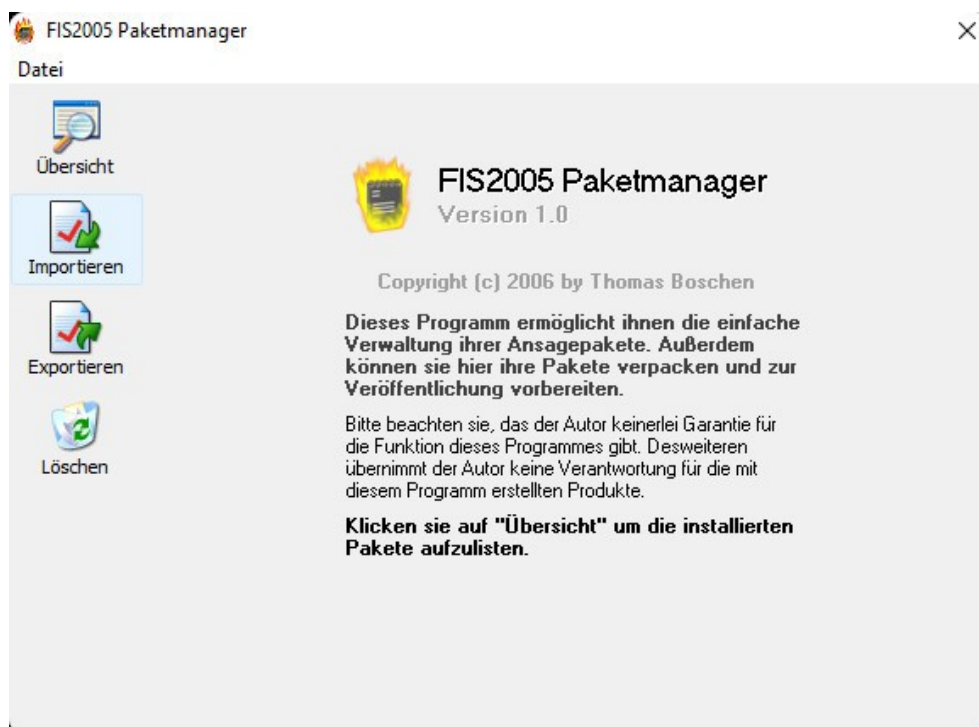
Now you can install your first sound addon.
Just double click with the left mouse button on the file
TSW2 Schnellfahrtstrecke Köln-Aachen DLC Pack.
The following window will appear.



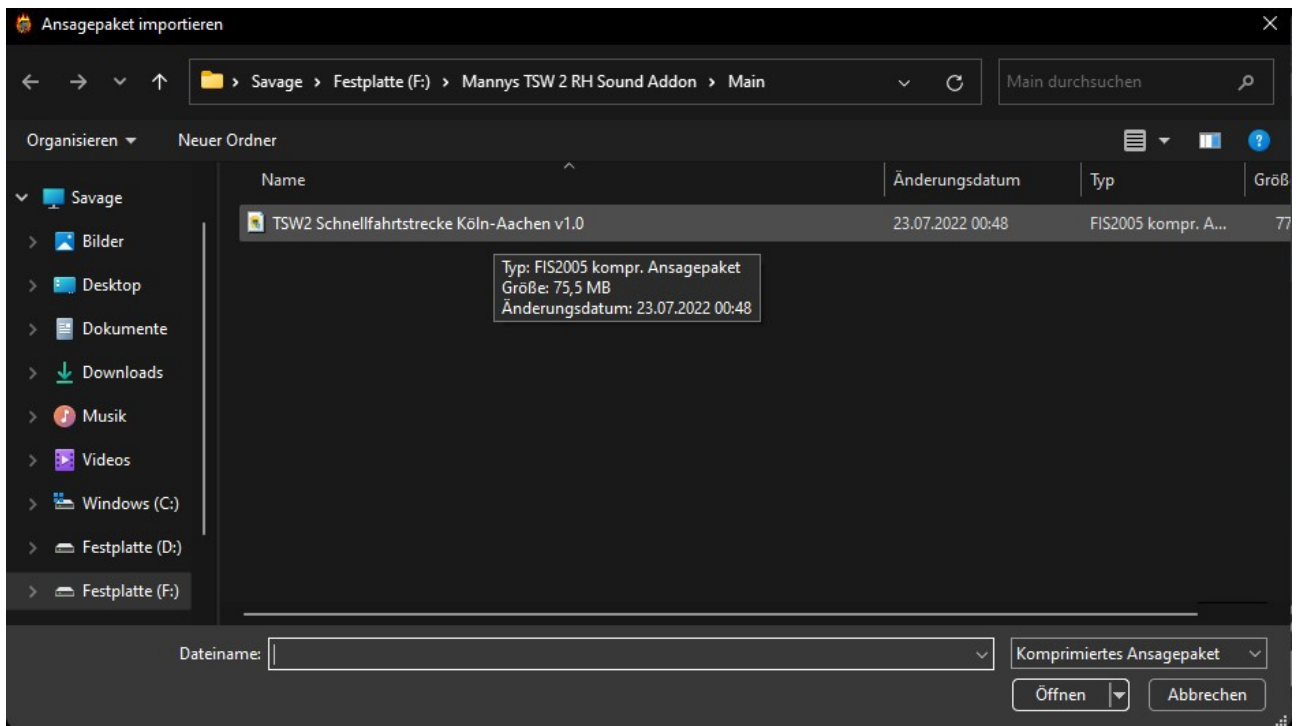
Here you can see which package it is, how big it is and how many sound files are in it. You only have to click on install and that's it. You will do the same later with all the other routes I will publish.



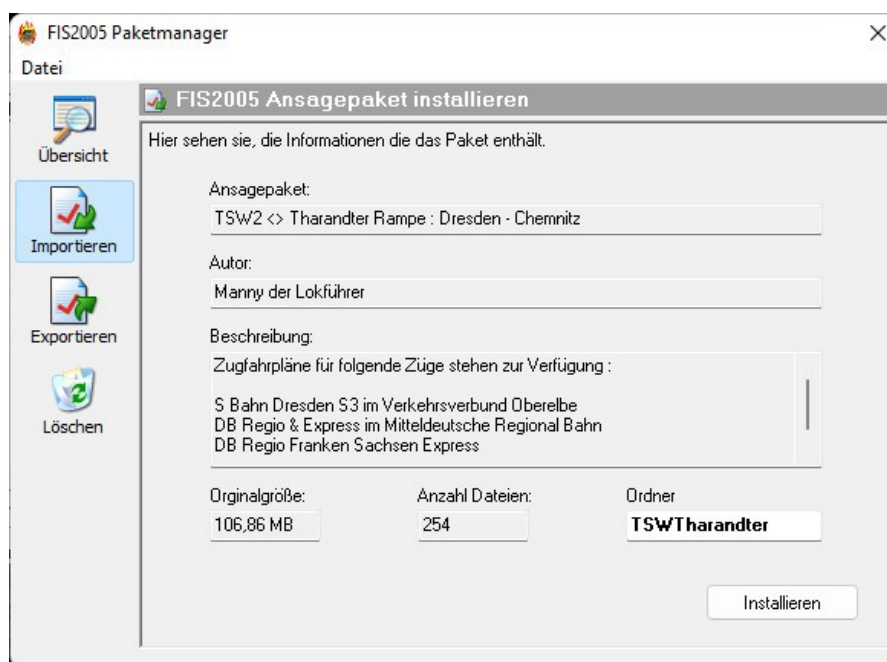
In this window go to the Pack tab and click on it again with the left mouse button.



A popup window will open. On the left side please select Import.



Now an explorer window opens, select your TIP file from the sound package and click on open in the lower right corner.



Now you get again the window which you also get if you double-click the tip file with the left mouse button in the normal case.

There you click then again simply down right on Install.

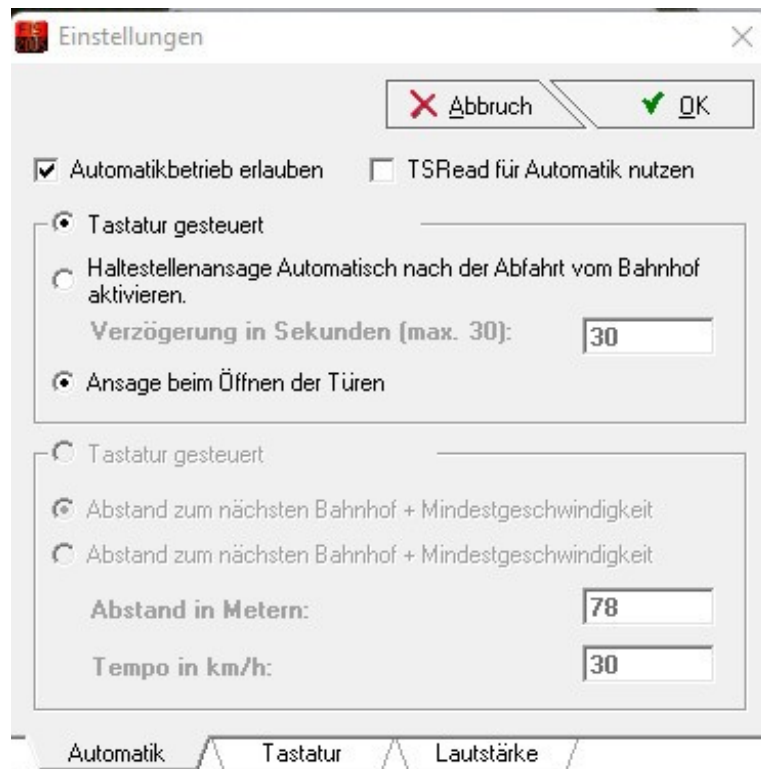
Now the sound package is loaded into your FIS2005 tool and is now also available to you.

Empfohlene Einstellungen

Now we come to a few important settings.
First start the FIS2005 with the red symbol.



THIS is how the main window of FIS2005 looks like.
Now please click once on the gray field to the right of Options.



Now a new popup window has opened. Here you can make settings for the automatic mode, keyboard settings and volume.

For the semi-automatic mode you have to follow the following steps.

1. you have to set the checkmark at Allow automatic mode
2. keyboard controlled must be selected
3. announcement when opening the doors must be selected

Then click again with the left mouse button on the right side above on the field Ok.

If you have now set this, the whole thing works as follows.

You press your button and the first sound is played.

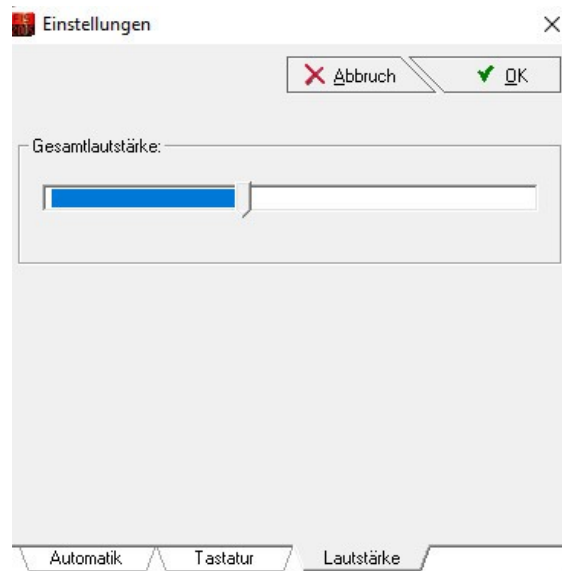
As soon as the first sound is played, the tool automatically jumps to the next sound. This will be played again when you press your key again.

A fully automatic playback is unfortunately not possible in Train Sim World, because there is no way to read the data.



If semi-automatic operation is desired, I would recommend deleting all key assignments and selecting only one key and inserting it when the doors open. Only then the automatic mode will work.

We come to the last tab Volume. The sounds are recorded in the highest quality and very loud, so that you can adjust this volume optimally with the game. For example, with sound mods for locomotives and railcars it can happen that some are extremely loud. One would then no longer hear the announcements. Therefore, I have the recordings deliberately recorded loud and elaborately processed.



I recommend to set the volume in the tool to 40%, the fine adjustments I would then recommend via the Windows volume mixer. For each volume change in the tool, it is unfortunately necessary to restart the program so that the new volume can be adopted.

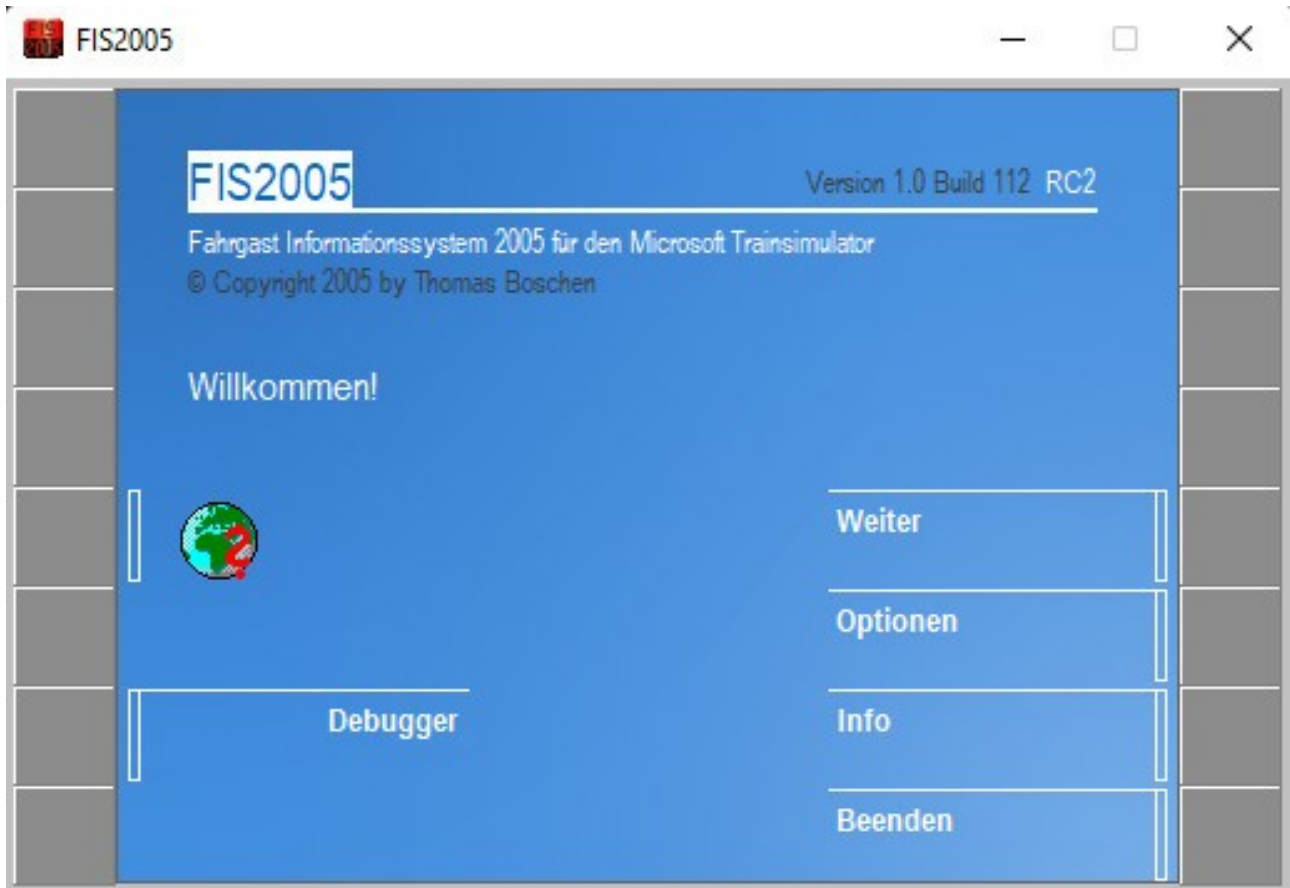
Important for the use of the tool FIS2005 it is necessary that the tool no matter whether FIS2005 or the FIS2005 editor must always be executed as administrator.

Otherwise it can happen with the FIS2005 that no sounds are played or settings in the editor are not taken over.

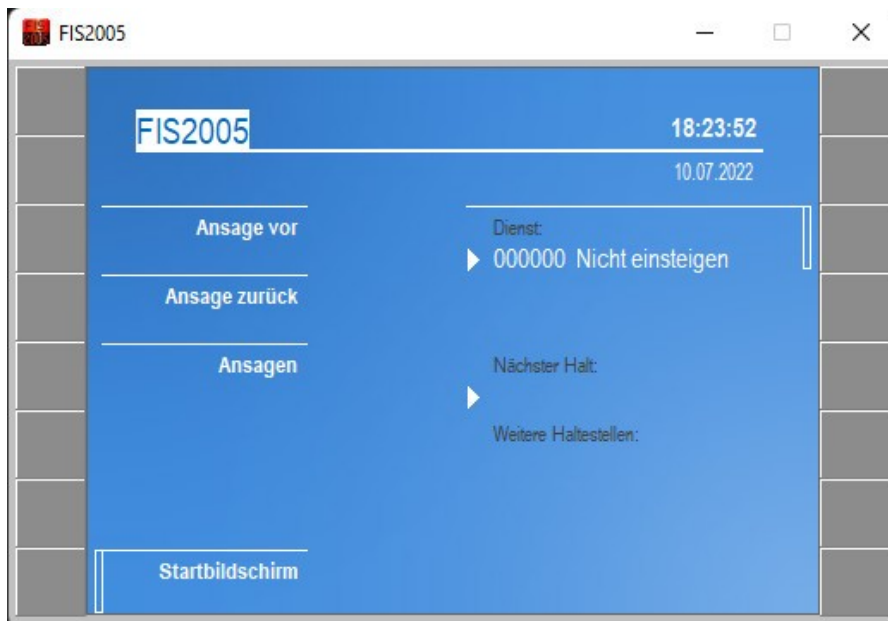
Operation of the FIS2005 tool

Now that the FIS2005 tool is installed and the first sound package is installed, I will show you how to load and use such a sound package.

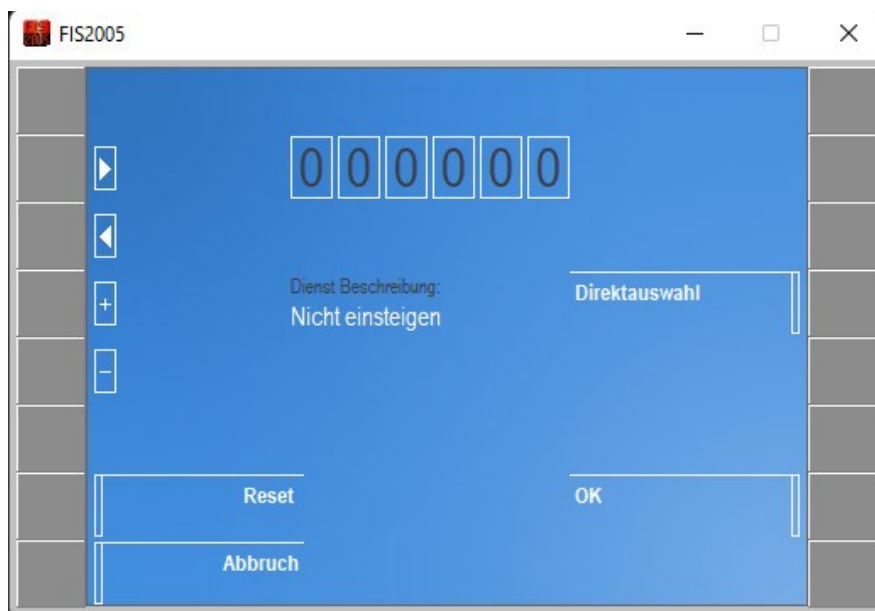
First you start your FIS2005 program (red icon) as administrator. Then you see the start screen.



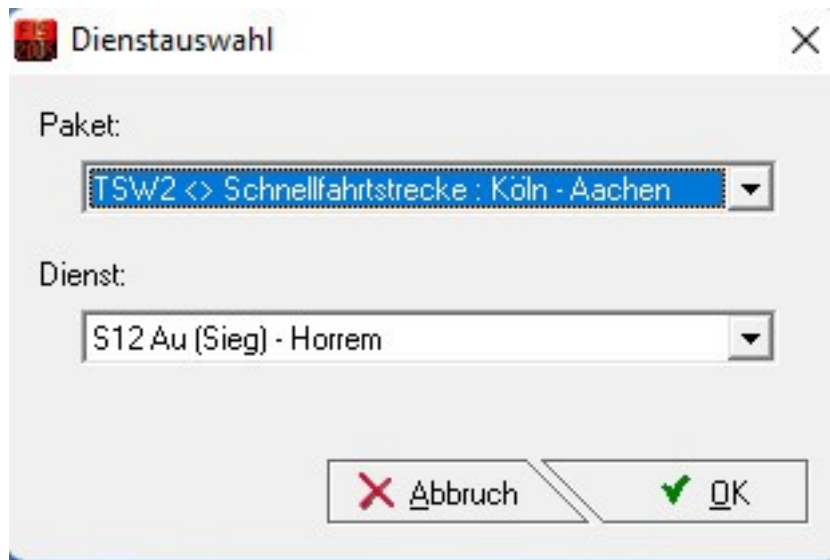
After the program has been started and you are on this screen, press once with the left mouse button on the gray field next to Next.



After you have clicked on continue, the 2nd window appears. There you have to load a service. Click again with the left mouse button on the gray field next to Service.



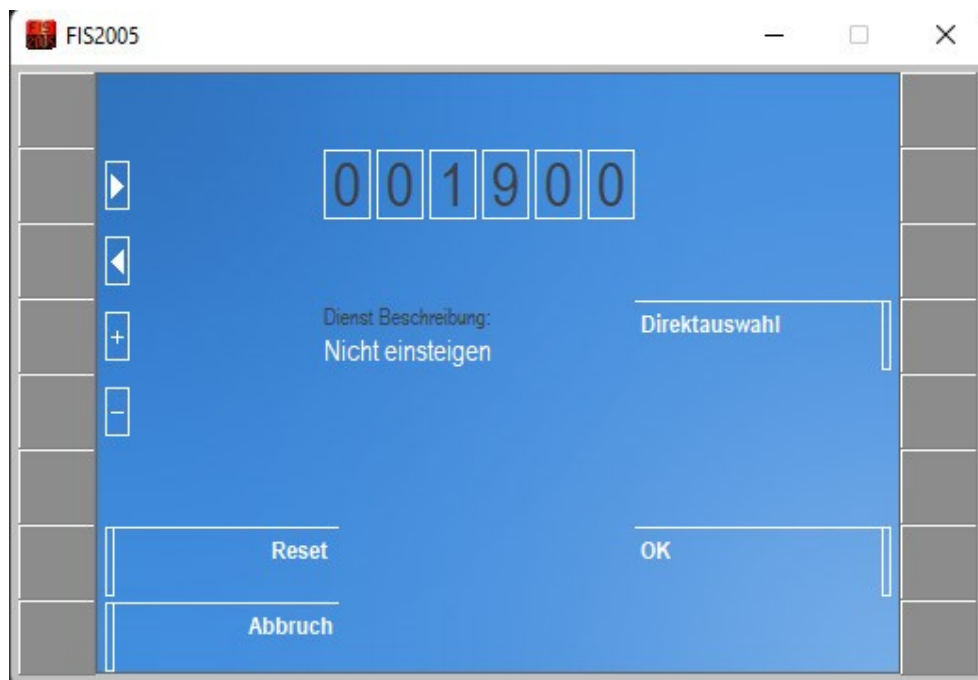
In this window you can enter the service number directly in the number box if you have it in mind. To do this, please use the arrow keys on the left side. Or you simply click on the gray box next to direct selection with the left mouse button.



Now a popup window opens. There you can select your sound package. In this example fast route: Cologne - Aachen.

Below you will find the duty rosters. In this example the duty roster for the S 12 from Au an der Sieg to Horrem was selected. Then press the OK button again with the left mouse button.

Now the duty roster S12 Au (Sieg) - Horrem is loaded from the sound package Fast route : Cologne – Aachen.



Here you can see the roster number at the top. Then just click on Ok and the loading process will be finished.



Once the loading process is finished you will see a small overview of what was loaded.

Left : Announcement package : Fast route : Cologne - Aachen
 Right : Service : S12 Au (Sieg) - Horrem
 The author : Who created this service

Service info :

I put some important information there.
 It can happen that trains stop at different tracks, instead of always at the same one. For this reason I have stored the annotations in the service as well as here in the service info. e.g. Abf G17 = Departure on track 7 or Arr. G10 = arrival on track 10

You can also see :
 Train comes from : Au an der Sieg
 Where the train changeover takes place
 Start and destination station with each track

When you are ready, just click on the grey field next to Apply to confirm this service.

Now the loading process is complete and you can start your service.



This is now the end of the clicker of your main window.

On the left side you can announce the announcements manually, fast forward to the next announcement or rewind an announcement. Or you can use the button you have selected for automatic mode. This is recommended if you have only one screen available.

Now we have gone through all the important steps for this tool.

If you have any questions, I will be happy to help you.

You can find help here:

<https://railomanie.eu/forum/index.php?thread/133-mannys-moddingspielwiese/&postID=2352#post2352>

Startup help (Start.bat file)

In my package there is a folder called startup help.
Please open this folder once. There is a file named :

"TSW3Mod_starter".

Please click this file with the right mouse button and select more options with the left mouse button. Then please click with the left mouse button on edit.

Then a new window opens with the following content :

```
@echo off
rem -----
rem -
rem - Manny's Station Announcements Modpack v3 Final -
rem - with the passenger information system -
rem - FIS2005 from Thomas Boschen -
rem -
rem -----

start "" "your instllation directory\FIS2005\bin\fis2005.exe"
start "" "C:\Program Files (x86)\Steam\steamapps\common\Train Sim World
3\WindowsNoEditor\TS2Prototype\Binaries\Win64\TS2Prototype-WIn64-
Shipping.exe"
```

Please replace your installation directory with your correct installation directory. Afterwards save.

Very important :

To make the bat file work in the background, you have to run the bat as administrator. Just create a shortcut of the bat on your desktop. Then click on the desktop on the shortcut with the right mouse button and click on advanced. Then just check the box Run as administrator and click ok. If you now double click on the shortcut of the bat file with the left mouse button, both tools & game should load one after the other.



Installing Manny's PAK files

In the main directory you will find the folder Mod-Paks. There you will find all the files for the trains on the Munich Augsburg main line, as well as the platform announcements mods.

Contents :

Manny's Station Announcements Mods :

!Mannys_HMA_DB_Station_Announcements_Mod.pak
!Mannys_HMA_SB_Station_Announcements_Mod.pak
!Mannys_HMA_SB-DB_Mix_Station_Announcements_Mod.pak

Important :

Please install only one of the three pak files, otherwise you may experience conflicts with the game. I did it like this. In the DLC folder where the Paks are installed or copied, I created a directory for inactive mods. I put all three in there and copy out the ones I need at the moment. This is how I change the Pak file.

Manny's Trainmod Packs :

!Mannys_DCZ_DB_Train_Mods_v4.pak (Dresden Chemnitz DLC)
DB double decker 766.2 DBpbzfa, DB BR143, DB BR612

!Mannys_DRA_DB_Train_Mods_v4.pak (Dresden Riesa DLC)
DB double-decker coaches 766.2 Dbpbzfa, DB BR146-2, DB BR143,
DB BR442 Talent 2

!Mannys_HBK_DB_Train_Mods_v4.pak (Hamburg Lübeck DLC)
DB double-decker coach 766.2 Dbpbzfa, DB BR 112

!Mannys_HMA_DB_Train_Mods_v4.pak (Munich Augsburg DLC)
DB BR423 S Bahn Munich MVV, DB Intercity Express BR403

Mannys_HRR_DB_Train_Mods_v4.pak (Mainline Rhine Ruhr DLC)
DB BR422, DB BR425

!Mannys_MSB_DB_Train_Mods_v4.pak (Mainspessart Bahn DLC)
DB BR146-2, DB double-decker coach 766.2 Dbpbzfa

!Mannys_RSN_DB_Train_Mods_v4.pak (Rhine Ruhr Sieg North DLC)
DB BR143, DB double-decker coach 766.2 Dbpbzfa

All locomotives were equipped with the signal announcement sound.
Some of the Sifa and Pzb sounds were reduced in volume because they were particularly loud. All multiple units and driving trailers were additionally equipped with a stay-behind-please sound. I have created the paks according to the DLC so that everyone can use the DLC that they have themselves.

Important :

!Mannys_XXX_DB_BRXXX_Soundmod_v3.pak → please delete if present.
New version also works with other routes and it is an extended version.

Copy these PAK files into your directory :

C:\Program Files (x86)\Steam\steamapps\common\Train Sim World 3\
WindowsNoEditor\TS2Prototype\Content\DLC



Changes to trains & platforms

Manny's_HMA_SB_Station_Announcements_Mod (new)

With this mod, the boring and monotonous station announcements are replaced by real spoken announcements. Here, all lines of the S 3 and S 4 have been reproduced. Some new announcements have also found their way into the mod.

Here it is also not possible to integrate original announcements without expensive licences.

Mannys_HMA_DB_Station_Announcements_Mod (new)

Announcements for trains from regional and long-distance traffic have been reproduced here. Here, many trains from the real world have been included, so that a little more variety comes into the game.

Manny's_HMA_SB-DB_MIX_Station_Announcements_Mod (new)

This is a mixture of S-Bahn, regional and long-distance announcements that are played at random.

Mannys_XXX_Train_Mods_v4 (new)

Here the locomotives, driving trailers and multiple units, which are available in a DLC and are intended for passenger traffic, are equipped with announcements for red signals and stay-behind please announcements.

Red signal announcements are activated by pressing the Sifa Reset button or with the round Push button.

Conclusion

These TIP files are exclusively intended for the operation of the FIS2005 tool and may not be used for any other purpose.

Also the upload to other sites is prohibited.
So now have fun.

IMPORTANT NOTICE. This is user generated content designed for use with Dovetail Games Software.

Dovetail Games does not approve or endorse this user generated content and does not accept any liability or responsibility regarding it.

This user generated content has not been screened or tested by Dovetail Games.

Accordingly, it

may adversely affect your use of Dovetail Games' products. If you install this user generated

content and it infringes the rules regarding user-generated content, Dovetail Games may choose to

discontinue any support for that product which they may otherwise have provided.

The Train Sim World EULA sets out in detail how user generated content may be used, which you

can review further here: www.dovetailgames.com/terms. In particular, this user generated content

includes work which remains the intellectual property of Dovetail Games and which may not be

rented, leased, sub-licensed, modified, adapted, copied, reproduced or redistributed without the

permission of Dovetail Games.

Your



Manny the train driver